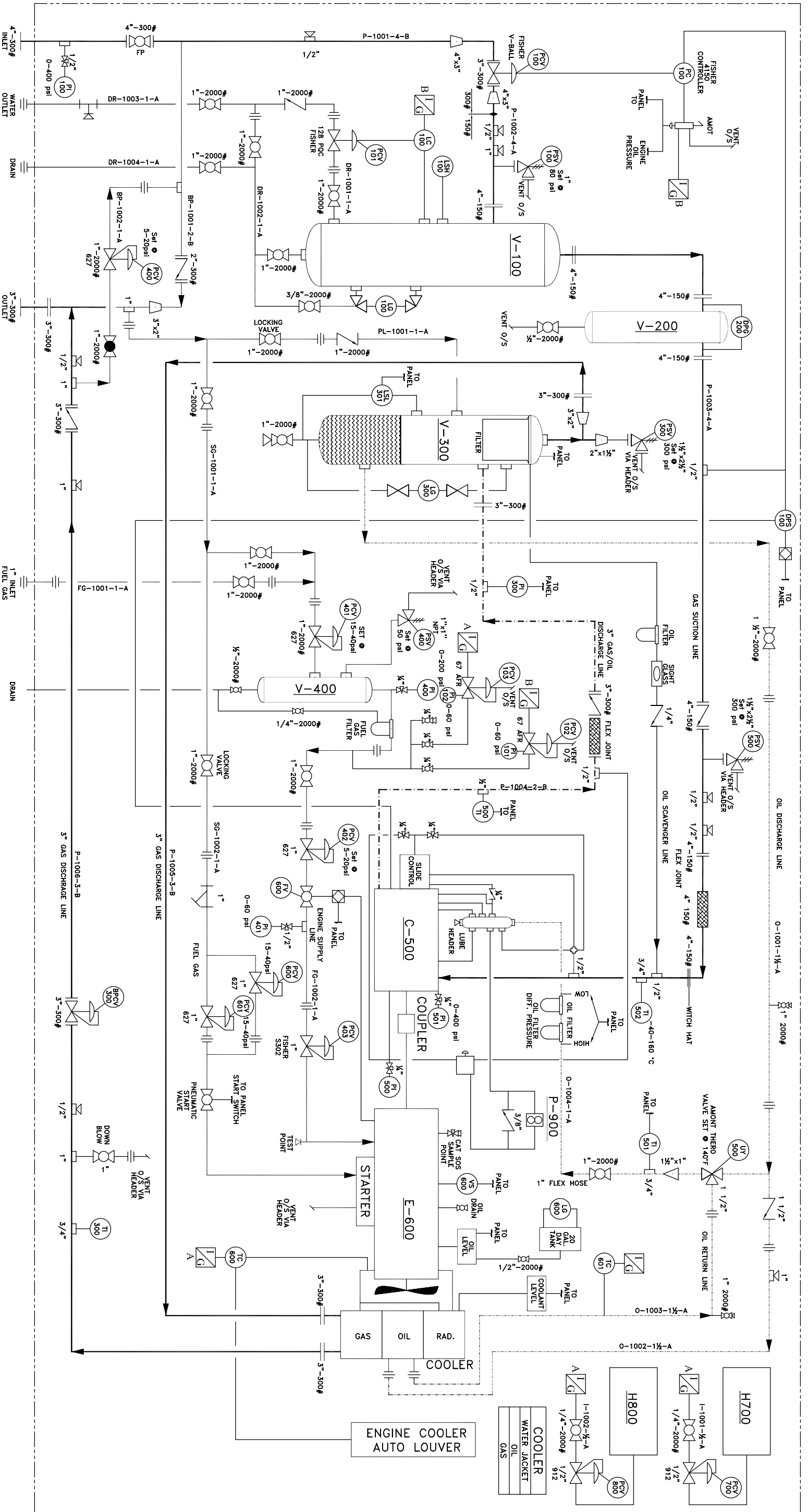


- V-100 INLET SEPARATOR Size: 610mm O.D. X 1286 mm S/S (24" X 50 5/8" S/S) MAWP 285 PSI @ 100°F
- V-200 INLET GAS FILTER Size: 508 mm O.D. X 960mm S/S (20" X 37 7/8" S/S) RATED @ 180 psi
- V-300 OIL COALESCING VESSEL Size: 102 mm O.D. X 914 mm S/S (4" X 36" S/S)
- V-400 FUEL SCRUBBER Size: 102 mm O.D. X 914 mm S/S (4" X 36" S/S)
- C-500 SCREW COMPRESSOR MYCOM 160LM
- E-600 NATURAL GAS ENGINE CATERPILLAR 3306A1AAC 220 HP
- H-700 HEATER Size: 305 mm X 609 mm (24" X 24") Model: CIS-CAN
- H-800 HEATER Size: 305 mm X 609 mm (24" X 24") Model: CIS-CAN
- P-900 PUMP Model: M30A994BEY17-43



| LINE TYPE | MAIN PROCESS GAS | OIL/GAS COMBINED | UTILITY PROCESS |
|---------------|----------------------|------------------|-----------------|
| LEDGEND | ----- | - - - - - | ---- |
| | SECONDARY PROCESS | INSTRUMENTATION | OIL ONLY LINE |
| COOLER LAYERS | WATER JACKET (FRONT) | OIL (TOP) | GAS (BOTTOM) |

| REV. | DESCRIPTION | JAM | BY | APP. | DATE |
|------|-------------------------|-----|----|------|----------|
| 0 | ISSUED FOR CONSTRUCTION | | | | 00-08-10 |



| 9000 SERIES COMPRESSOR PIPING AND INSTRUMENTATION DIAGRAM | | | |
|---|--------------|----------------|----------|
| CUSTOMER: | GULF CANADA | JOB NO.: 90104 | |
| Drawn by: | S.A. LEGGOTT | Checked by: | |
| DATE: | 00-04-05 | SCALE: | N.T.S. |
| | | DRAWING NO.: | P-102-01 |
| | | REV.: | 1 |