

V-150

OIL COALESCING SEPARATOR

Manufacturer: ENERFLEX
 Size: 20" x 37" S/S
 Rated: 3500psi @ 250°F
 1/8" CA

V-160

FUEL GAS SCRUBBER

Manufacturer: ENERFLEX
 Size: 4" x 36" S/S
 Rated: 500psi @ 350°F
 1/8" CA

V-170

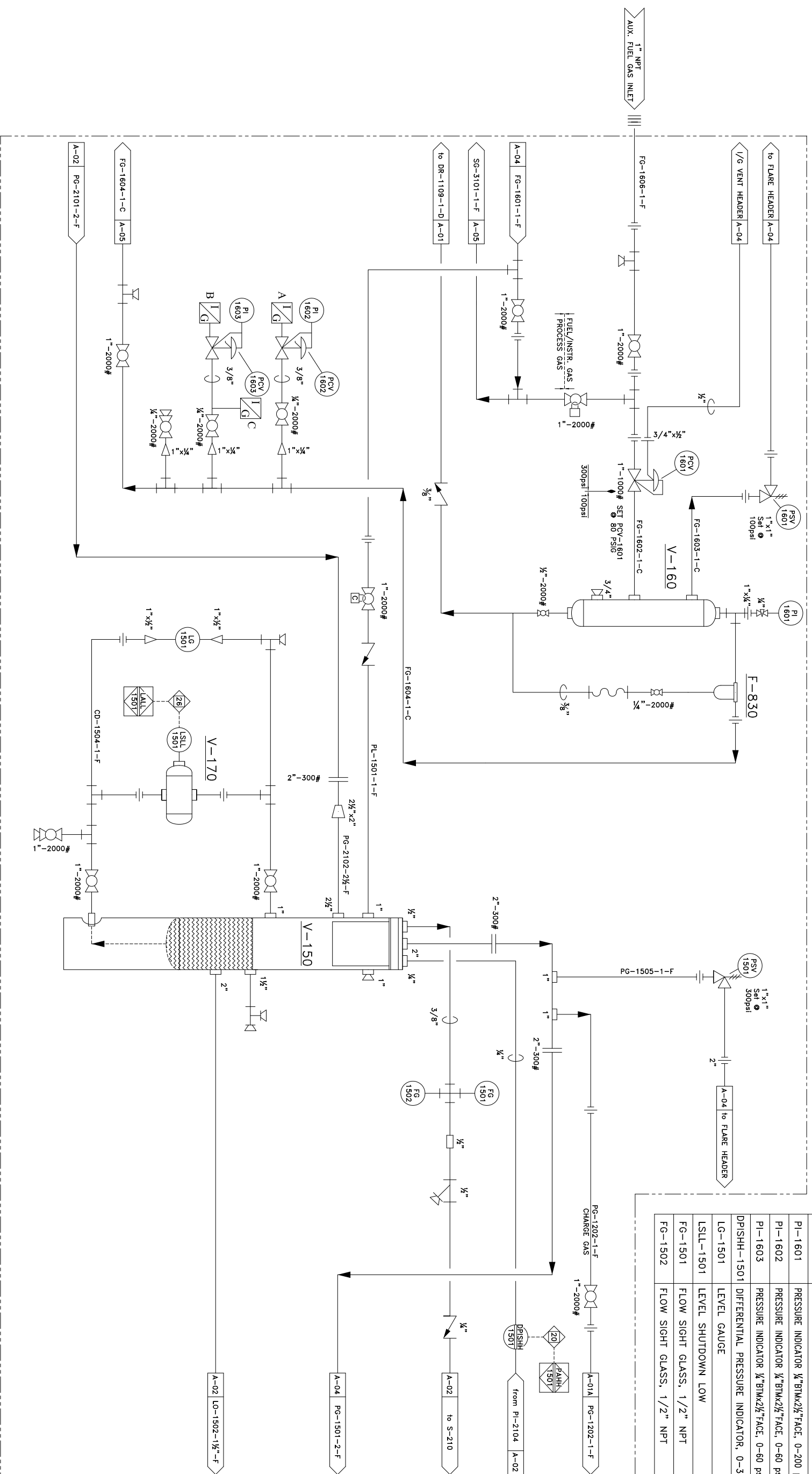
FLOAT CHAMBER

Manufacturer: ENERFLEX
 Size: 4" x 6" S/S
 Rated: 500psi @ 350°F
 1/8" CA

F-830

FUEL GAS FILTER

Manufacturer: SPX AIR TREATMENT
 Part: 3154826
 Element: 3154827
 Rated: 250psig @ 150°F



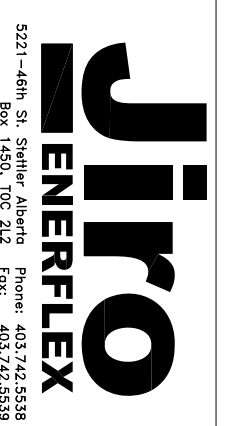
MATERIAL LIST

ITEM	DESCRIPTION	MAKE	MODEL
PSV-1501	PRESSURE SAFETY VALVE, 1"X1", SET@ 300psi	MERCER	E ORIFICE
PSV-1601	PRESSURE SAFETY VALVE, 1"X1" NPT, SET @ 100 psi	MERCER	D ORIFICE
PCV-1601	PRESSURE CONTROL VALVE, SPRING RANGE 70-150psi, 3/16" PORT	FISHER	627-597
PCV-1602	PRESSURE CONTROL VALVE, SPRING RANGE 0-35psi	FISHER	67CFR-362
PCV-1603	PRESSURE CONTROL VALVE, SPRING RANGE 0-35psi	FISHER	67CFR-362
PI-1601	PRESSURE INDICATOR 1/2"BTMx2 1/2"FACE, 0-200 psi/1400 KPA, SSIF	WIKA	104SS200
PI-1602	PRESSURE INDICATOR 1/2"BTMx2 1/2"FACE, 0-60 psi/0-420 KPA, SSIF	WIKA	104SS60
PI-1603	PRESSURE INDICATOR 1/2"BTMx2 1/2"FACE, 0-60 psi/0-420 KPA, SSIF	WIKA	104SS60
DPISHH-1501	DIFFERENTIAL PRESSURE INDICATOR, 0-30psid	MID-WEST	120-AA-00-Q(CA)
LG-1501	LEVEL GAUGE	PENBERTHY	1RM-7STLINE
LSLL-1501	LEVEL SHUTDOWN LOW	MURPHY	L1200
FG-1501	FLOW SIGHT GLASS, 1/2" NPT	AC&R	SG-04
FG-1502	FLOW SIGHT GLASS, 1/2" NPT	AC&R	SG-04

LINE TYPE LEGEND

	PROCESS TUBING/ INSTRUMENT SUPPLY
	MAIN PROCESS GAS
	SECONDARY PROCESS
	UTILITY PROCESS
	PNEUMATIC SIGNAL
	HYDRAULIC SIGNAL
	ELECTRIC SIGNAL

REV.	DESCRIPTION	DATE	BY	CHKD	APPD
1	AS BUILT	05-01-18	SLS	ENG	
0	ISSUED FOR CONSTRUCTION	04-12-02	WST	IR	



T3500 SERIES COMPRESSOR
 FMG 160-L SCREW w/ 3304 NA ENGINE
 TRAILER MOUNTED, SOUR SERVICE

COMPANY: BURLINGTON JOB NO.: 35345
 Drawn by: WST Checked by: Approved by: DATE: 04-03-29 SCALE: DRAWING NO.: CDL-35345-A-03 REV.: 1

5221-46th St. Stettler Alberta Phone: 403.742.5538
 Box 1450, T0C 2L2 Fax: 403.742.5539