

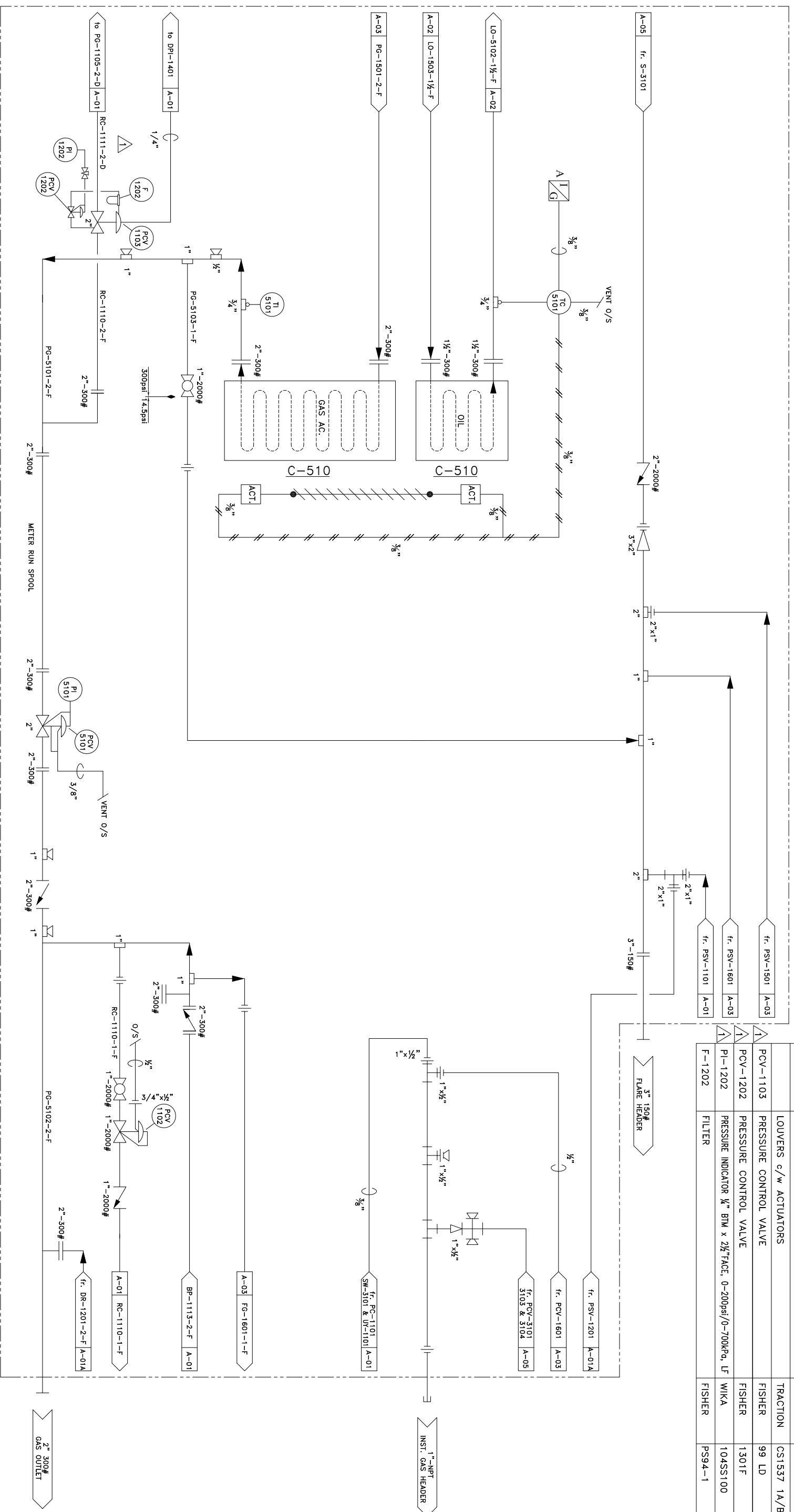
C-510

OIL/GAS AFTER COOLER

Manufacturer: GLOBAL HEAT TRANSFER  
 Size: 38.875" x 41.25" x 5.5"  
 Model: 1600 (SPLIT)  
 Rated: 350psi @ 250°F  
 Aluminum Header  
 Aluminum Tubes

MATERIAL LIST

ITEM	DESCRIPTION	MAKE	MODEL
PCV-1102	PRESSURE CONTROL VALVE SET @ 5-20 psi, 3/8" PORT	FISHER	627 552
PCV-5101	BACK PRESSURE CONTROL VALVE	KIMRAY	230SGTBP-D
PI-5101	PRESSURE INDICATOR 1/2" BIM x 2 1/2"FACE, 0-300psi/0-2100kPa, SSIF	WIKA	104SS300
TI-5101	TEMPERATURE INDICATOR 3" FACE, -40 TO 160 °F	TREND	-40/1604
TC-5101	TEMPERATURE CONTROLLER	KIMRAY	HT-12
	LOUVERS e/w ACTUATORS	TRACTION	CS1537 1A/B
	PRESSURE CONTROL VALVE	FISHER	99 LD
PCV-1103	PRESSURE CONTROL VALVE	FISHER	1301F
PI-1202	PRESSURE INDICATOR 1/2" BIM x 2 1/2"FACE, 0-200psi/0-700kPa, LF	WIKA	104SS100
F-1202	FILTER	FISHER	PS94-1



LINE TYPE LEGEND

	PROCESS TUBING/ INSTRUMENT SUPPLY
	MAIN PROCESS GAS
	SECONDARY PROCESS
	UTILITY PROCESS
	PNEUMATIC SIGNAL
	HYDRAULIC SIGNAL
	ELECTRIC SIGNAL

REV.	DESCRIPTION	DATE	CHKD	APPD
2	AS BUILT	05-01-18	CAD	ENG
1	REVISED FOR SC-1353-C1	05-01-12	WST	IR
0	ISSUED FOR CONSTRUCTION	04-12-02	CAD	ENG

5221-46th St. Stettler Alberta Phone: 403.742.5538  
 Box 1450, T0C 2L2 Fax: 403.742.5539

**T3500 SERIES COMPRESSOR**  
 FMG 160-L SCREW w/ 3304 NA ENGINE  
 TRAILER MOUNTED, SOUR SERVICE

COMPANY: BURLINGTON JOB NO.: 35345  
 Drawn by: WST Checked by: Approved by: DATE: 04-03-29 SCALE: DRAWING NO.: CDL-55345-A-04 REV.: 2