

M-310

NATURAL GAS ENGINE

Manufacturer: CATERPILLAR
Model: G3304NA
95hp / 80hp USABLE
Naturally Aspirated 4 Cylinder

C-520

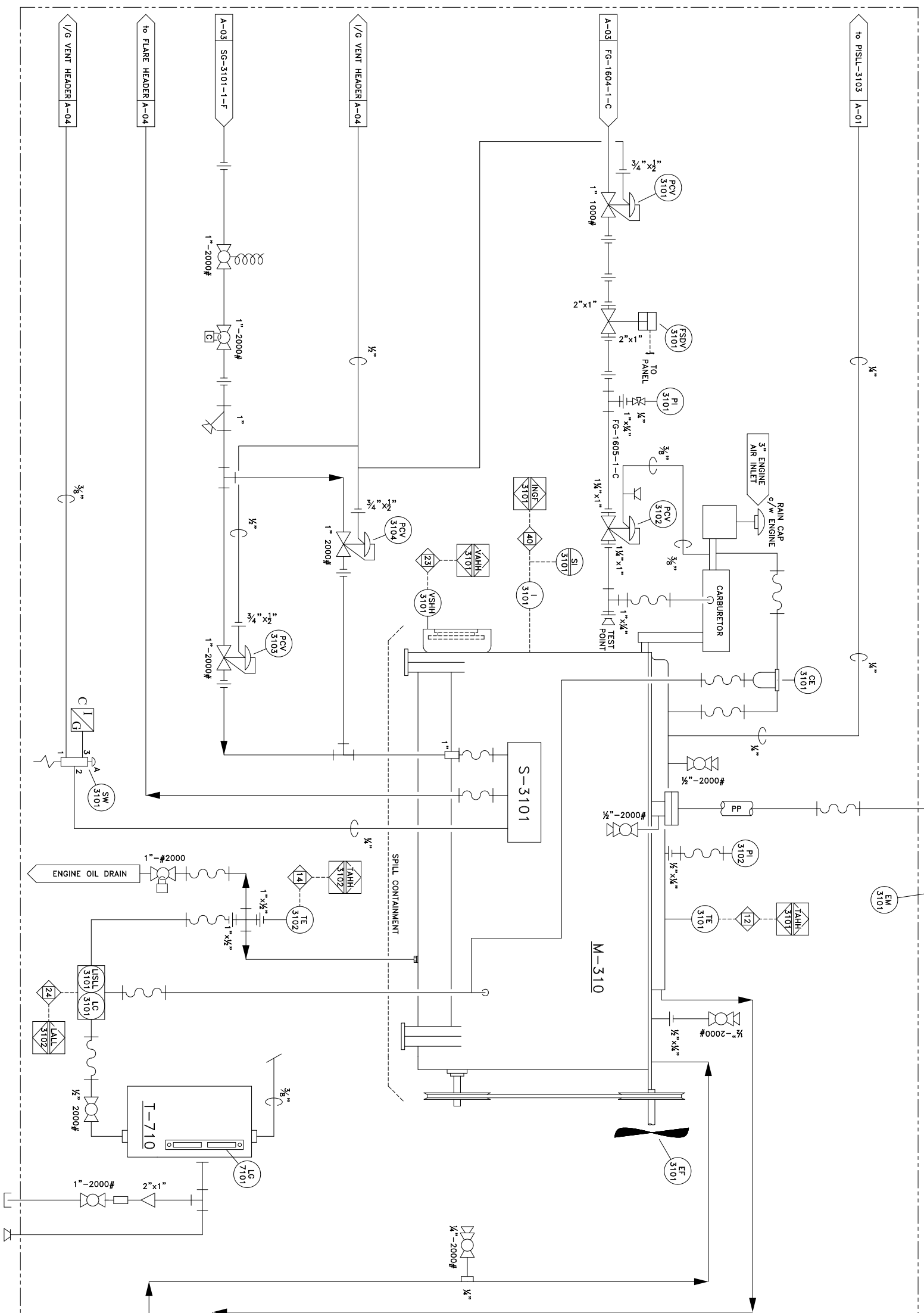
ENGINE WATER JACKET

Manufacturer: GLOBAL HEAT TRANSFER
Size: 35"x24"x8"
Model: GBL 7400

T-710

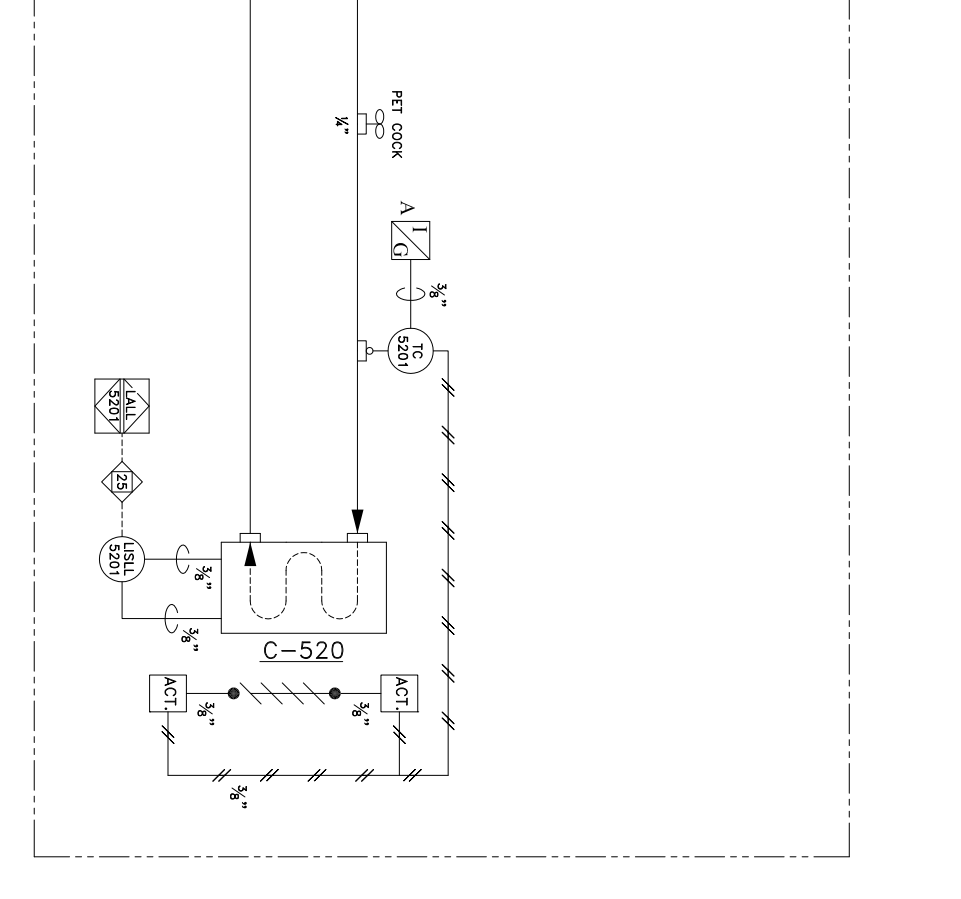
ENGINE OIL DAY TANK

Manufacturer: ENERFLEX
Size: 20gal
Part: 05-37



MATERIAL LIST

ITEM	DESCRIPTION	MAKE	MODEL
FSDV-3101	FUEL SHUT DOWN VALVE	MURPHY	M5081-C
VSHH-3101	VIBRATION SWITCH HIGH	MURPHY	VS-2
USLL-3101	LEVEL INDICATING SHUT DOWN SWITCH, c/w LC-3101	KENCO	KLCE12
USLL-5201	LEVEL INDICATING SHUT DOWN SWITCH	MURPHY	EL150K1E
PCV-3101	PRESSURE CONTROL VALVE SET @ 5-20 psig, 1/2" PORT	FISHER	627-496
PCV-3102	PRESSURE CONTROL VALVE, (CAT NO. 2W6022)	FISHER	Y600A1331
PCV-3103	PRESSURE CONTROL VALVE, SPRING RANGE 15-40psig, 1/2" PORT	FISHER	627-557
PCV-3104	PRESSURE CONTROL VALVE, SPRING RANGE 15-40psig, 1/2" PORT	FISHER	627-557
TC-5201	TEMPERATURE CONTROLLER	KIMRAY	HT-12
LG-7101	LEVEL GAUGE	STAUFF	SMA1278-S-T-12
PI-3101	PRESSURE INDICATOR 1/2" BTMx2 1/2" FACE, 0-60 psi/0-420 KPa, SSIF	WIKA	104SS60
PI-3102	PRESSURE INDICATOR 1/2" CBMx2 1/2" FACE, -30"Hg/30psi, LF	WIKA	25BUBL4-C30
TE-3101	TEMPERATURE ELEMENT COMES WITH 2' PYROLEAD	ALTRONIC	151000156
TE-3102	TEMPERATURE ELEMENT COMES WITH 2' PYROLEAD	ALTRONIC	151000156
I-3101	IGNITION	ALTRONIC III	61-2310
S-3101	STARTER	TDI TURBOSTART	T30-P
SW-3101	START SWITCH (ON PANEL STAND)	INGERSOLL-RAND	SMB-618
SI-3101	SPEED INDICATOR/ HOUR METER/ OVERSPEED	ALTRONIC	DTHO 3201
EF-3101	ENGINE FAN 36"	CROWLEY	36"
CE-3101	CRANKCASE EVACUATION FILTER	PARKER RACOR	CCV 4500
EM-3101	EXHAUST MUFFLER	SILEX	4" CRITICAL GRADE



LINE TYPE LEGEND

	PROCESS TUBING/INSTRUMENT SUPPLY
	MAIN PROCESS GAS
	SECONDARY PROCESS
	UTILITY PROCESS
	PNEUMATIC SIGNAL
	HYDRAULIC SIGNAL
	ELECTRIC SIGNAL

REV.	DESCRIPTION	DATE	BY	CHKD	APPD
1	AS BUILT	05-01-18	CAJ	ENG	
0	ISSUED FOR CONSTRUCTION	04-12-02	WST	IR	

Jiro ENERFLEX

5221-46th St. Stettler, Alberta Phone: 403.742.5538
 Box 1450, T0C 2L2 Fax: 403.742.5539

T3500 SERIES COMPRESSOR
 FMG 160-L SCREW w/ 3304 NA ENGINE
 TRAILER MOUNTED, SOUR SERVICE

COMPANY: BURLINGTON JOB NO.: 35345
 Drawn by: WST Checked by: Approved by: DATE: 04-03-29 N.T.S. SCALE: DRAWING NO.: CDL-35345-A-05 REV.: 1