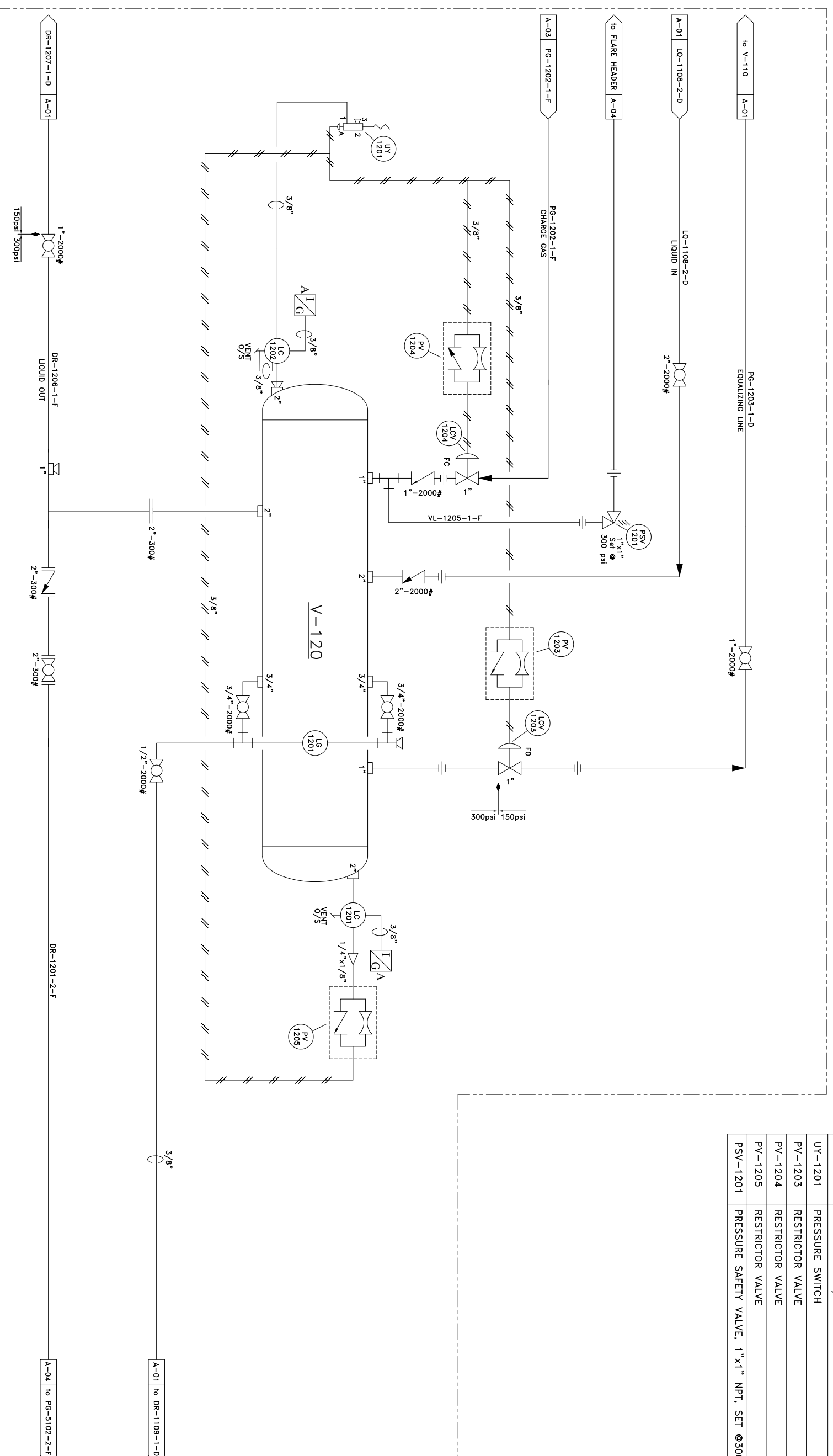


**V-120
BLOWCASE**

Manufacturer: ENERFLEX
Size: 12" x 60" S/S
Rated: 3/5psi @ 250°F
1/8" CA

MATERIAL LIST

ITEM	DESCRIPTION	MAKE	MODEL
LC-1201	LEVEL CONTROLLER	MURPHY	L1200NDVO
LC-1202	LEVEL CONTROLLER	MURPHY	L1200NDVO
LCV-1203	LEVEL CONTROL VALVE, 1" NPT, 1/2" PORT F.O.	NORRISEAL	SN4001V-9BA2
LCV-1204	LEVEL CONTROL VALVE, 1" NPT, 1/2" PORT F.O.	NORRISEAL	SN4001V-9BA4
LG-1201	LEVEL GAUGE c/w 330U VALVES TYPE CG	PENBERTHY	1RM7-STLINE
UY-1201	PRESSURE SWITCH	AMOT	4057D031H2
PV-1203	RESTRICTOR VALVE	SMC	AS4000
PV-1204	RESTRICTOR VALVE	SMC	AS4000
PV-1205	RESTRICTOR VALVE	SMC	AS4000
PSV-1201	PRESSURE SAFETY VALVE, 1"x1" NPT, SET @300 psi	MERCER	E ORIFICE



LINE TYPE LEGEND

	PROCESS TUBING/ INSTRUMENT SUPPLY
	MAIN PROCESS GAS
	SECONDARY PROCESS
	UTILITY PROCESS
	PNEUMATIC SIGNAL
	HYDRAULIC SIGNAL
	ELECTRIC SIGNAL

REV.	DESCRIPTION	DATE	CHKD	APPD
1	AS BUILT	05-01-18	CAID	ENG
0	ISSUED FOR CONSTRUCTION	04-12-02	WST	IR

5221-46th St. Stettler, Alberta Phone: 403.742.5538
Box 1450, T0C 2L2 Fax: 403.742.5539

T3500 SERIES COMPRESSOR
FMG 160-L SCREW w/ 3304 NA ENGINE
TRAILER MOUNTED, SOUR SERVICE

COMPANY: BURLINGTON JOB NO.: 35345
Drawn by: WST Checked by: Approved by: DATE: 04-03-29 SCALE: DRAWING NO.: CDL-35345-A-01A REV.: 2